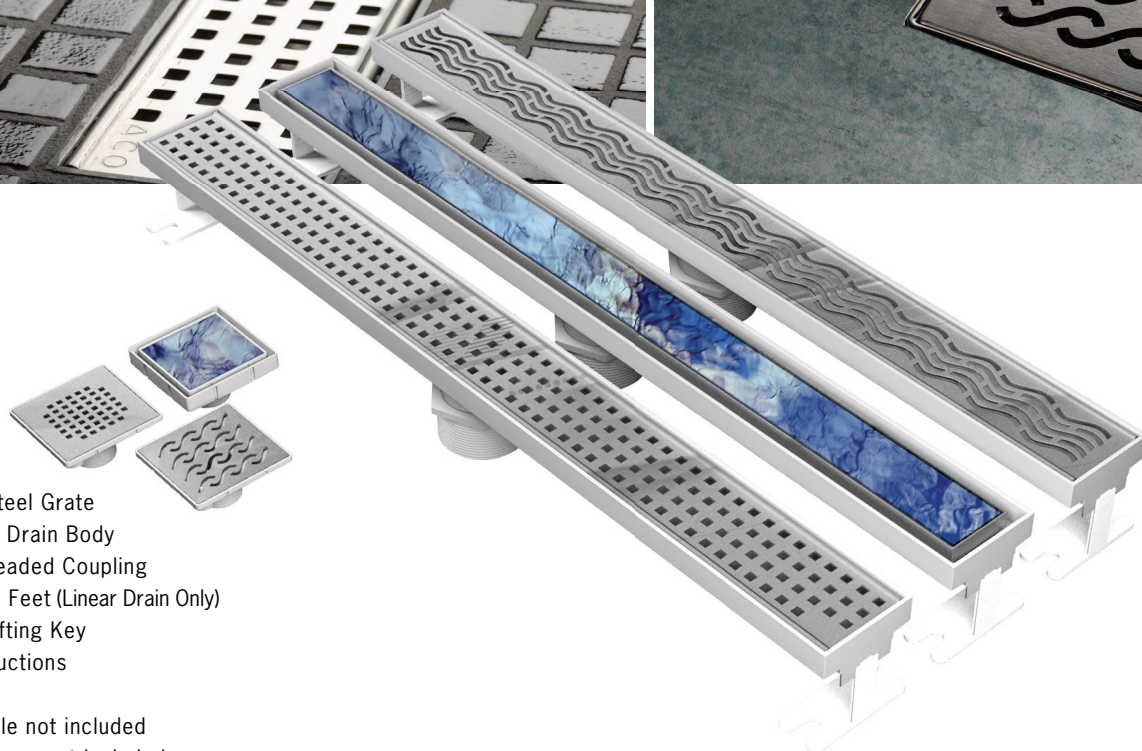


Art for the Bathroom Floor

- 27", 36" and 48" linear drains, 6" point drains
- 304 stainless steel grates, ABS plastic bodies
- Wavy, Square & Tile* grate designs
- ADA compliant
- Affordable & easy to install
- Works with standard drain flanges**



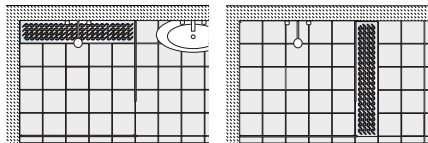
Included:
 Stainless Steel Grate
 ABS Plastic Drain Body
 2" ABS Threaded Coupling
 (2) Leveling Feet (Linear Drain Only)
 (1) Grate Lifting Key
 Install Instructions

* Custom tile not included

** Drain flange not included

#37085	QuARTz Plus 27" Tile Linear ShowerDrain	#37087	QuARTz Plus 48" Tile Linear ShowerDrain
#37245	QuARTz Plus 27" Square Linear ShowerDrain	#37242	QuARTz Plus 48" Square Linear ShowerDrain
#37244	QuARTz Plus 27" Wavy Linear ShowerDrain	#37240	QuARTz Plus 48" Wavy Linear ShowerDrain
#37086	QuARTz Plus 36" Tile Linear ShowerDrain	#37100	QuARTz Plus 6" Tile Point ShowerDrain
#37243	QuARTz Plus 36" Square Linear ShowerDrain	#37078	QuARTz Plus 6" Square Point ShowerDrain
#37241	QuARTz Plus 36" Wavy Linear ShowerDrain	#37080	QuARTz Plus 6" Wavy Point ShowerDrain

1. Designer Linear Shower Drain Placement



Placement of QuARTz Plus linear shower drain should be ideally at end or at threshold of shower.

2. Locate Pipework

Re-locate rough-in pipework if necessary to align with desired placement of linear drain. Cover with flooring mortar if necessary.

3. Install Drain Flange

Install 2" drain flange with preferred method to rough-in pipe. Note: drain flange not supplied; obtain from plumbing retailer.

4. Waterproof Floor

Install waterproofing membrane over floor and cut to size. Cut out area for drain flange opening and secure membrane in place over drain flange with membrane clamp.



5. Install Coupling

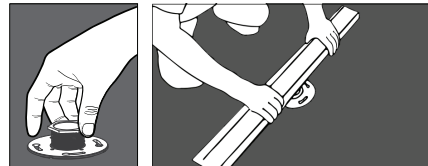
Thread 2" coupling (included) into standard 2" shower drain flange. Hand tighten.

6. Level the Drain

Use leveling feet (included) to level unit for proper drainage and help stabilize channel during floor installation.

7. Insert Linear Shower Drain

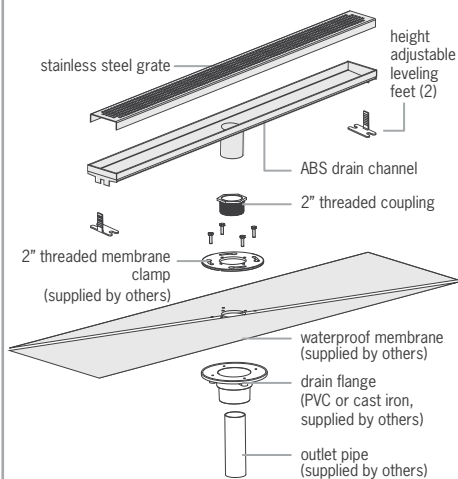
Coat exterior of linear shower drain outlet with ABS solvent cement and insert into 2" coupling. Push drain down to correct height. Note: top of linear shower drain should be flush with finished surface.



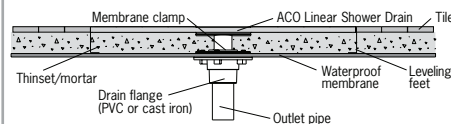
8. Flooring

Complete installation of linear shower drain by installing preferred flooring and grate.

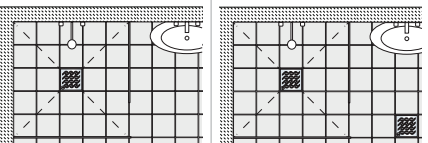
Exploded view of Linear Shower Drain



Installation Detail



1. Designer ShowerPoint Drain Placement



Use single ShowerPoint drain within shower area. Floors must be graded up to 0.25in/ft or other barriers must be used to prevent flow of water into bathroom area.

Use multiple ShowerPoint drains positioned within both shower and bathroom areas. Level threshold floors can be used as bathroom ShowerPoint will also drain any liquid from cleaning or other bathroom fixtures.

2. Locate Pipework

Re-locate rough-in pipework if necessary to align with desired placement of ShowerPoint drain. Cover with flooring mortar if necessary.

3. Install Drain Flange

Install 2" drain flange with preferred method to rough-in pipe. Note: drain flange not supplied; obtain from plumbing retailer.

4. Waterproof Floor

Install waterproofing membrane over floor and cut to size. Cut out area for drain flange opening and secure membrane in place over drain flange with membrane clamp.

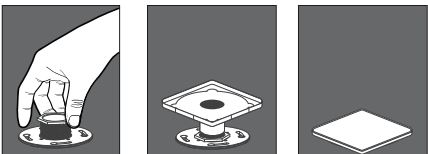


5. Install Coupling

Thread 2" coupling (included) into standard 2" shower drain flange. Hand tighten.

6. Insert Point Drain

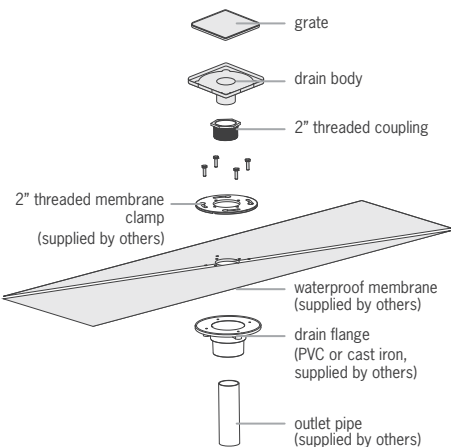
Coat exterior of ShowerPoint drain outlet with ABS solvent cement and insert into 2" coupling. Push drain down to correct height. Note: top of ShowerPoint drain should be flush with finished surface.



7. Flooring

Complete installation of ShowerPoint drain by installing preferred flooring and grate.

Exploded view of ShowerPoint Drain



Installation Detail

